



Óscar Garrido de la Rosa

# **afar brief dim hair**

for oboe and chamber orchestra

(Freiburg, 2005)

# afar brief dim hair

## for oboe and chamber orchestra

*Commissioned by the Freiburger Kammerensemble.*

*Premiered on the 4<sup>th</sup> of February, 2005 in the Aula of the Albert-Ludwigs-Universität, Freiburg by Bettina Crimmins (oboe) and the Freiburger Kammerensemble under the direction of Manuel Nawri.*

I.	brief.....	1
II.	each is .....	24
III.	afar dim hair.....	50

"afar brief dim hair" is, to a certain extent, a conventional concert piece for solo instrument (the oboe) and orchestra in three movements. However, the relationship between the solo part and the orchestra (subdivided into winds and strings) is not qualitative, rather quantitative. It is neither a dialogue in which motives are taken up and reformulated nor an argument with theses, antitheses, premises and conclusions, but instead a collective monologue in which words, syllables and letters are split equally into three groups – oboe, winds and strings. Motivic-thematic work has been consciously avoided: each group has its own material. Interrelation occurs only as "collateral damage" (a favourite euphemism of NATO reporting since the war in Kosovo).

Óscar Garrido de la Rosa

### Notes for performance:

The work is intended for community or student orchestra. It may of course be performed by a professional orchestra.

String sections should each be made up of at least four players.

Accidentals only affect the immediately following note.

① ② (for solo oboe and first clarinet): use alternate fingering for the same pitch.

If the work will be performed, please let the composer know at the address below:

Óscar Garrido de la Rosa

oscar@chronophonie.de

Tel: +49 (0)761 707 6642

**Creative commons licence:** Please feel free to copy, distribute, display and perform this work and to make derivative works under the following conditions: You must give the original author credit, You may not use this work for commercial purposes. If you alter, transform, or build upon this work, you may distribute the resulting work only under a license identical to this one. For any reuse or distribution, you must make clear to others the license terms of this work. Any of these conditions can be waived if you get permission from the copyright holder.



## I. brief

♩ = 93

1

♩ = 60

5

Fl. 1

Fl. 2

Ob. 1

Ob. 2

Kl. 1

Kl. 2

Ob.

Vln. I

Vln. II

Vln. III

Vla.

*ppp* *p*

*ppp* *p*

*p*

*ppp* *p*

*ppp* *p*

*mf* *f* *pp* *pp*

*p* *ppp* *p*

*p* *ppp* *p*

*p* *ppp* *p*

*p* *ppp* *p*

[illegible]

4

♩ = 53

14

Fl. 1 *mf*

Fl. 2 *mf*

Ob. 1 *mf*

Ob. 2

Kl. 1 *mf*

Kl. 2

Ob. 14 *pp* 6 *ff* 5 *p*

Vln. I 14 *p* *fff* *ppp* *ppp*

Vln. II *p* *fff* *ppp* *ppp*

Vln. III *p* *fff* *ppp* *ppp*

Vla. *p* *fff* *ppp* *ppp*

♩ = 66



16

Fl. 1

Fl. 2

Ob. 1

Ob. 2

Kl. 1

Kl. 2

Ob.

Vln. I

Vln. II

Vln. III

Vla.

*f*

*f*

*f*

*f*

*f*

*f*

*mf* *pp* *f* *mf* *pp* *fff*

*ppp*

*ppp*

*ppp*

*ppp*



♩ = 85



18

Fl. 1

Fl. 2

Ob. 1

Ob. 2

Kl. 1

Kl. 2

Ob.

Vln. I

Vln. II

Vln. III

Vla.

*pp*

*pp*

*ff*

*ff*

*pp* *ff*

*pp* *ff*

*mf* *pp* *ff* *f*

*p* *ppp* *ppp* *ppp* *f* *pp* *f*

*p* *ppp* *ppp* *ppp* *f* *pp* *f*

*p* *ppp* *ppp* *ppp* *f* *pp* *f*

*p* *ppp* *ppp* *ppp* *f* *pp* *f*

♩ = 60

21

Fl. 1

Fl. 2

Ob. 1

Ob. 2

Kl. 1

Kl. 2

Ob.

Vln. I

Vln. II

Vln. III

Vla.

*mf*

*mf*

*p*

*p*

*mf*

*pp*

*ff*

*pp*

*p*

*p*

*fff*

*ppp*

*fff*

*ppp*

*fff*

*ppp*

*p*

*fff*

*ppp*

♩ = 53

24



Fl. 1

Fl. 2

Ob. 1

Ob. 2

Kl. 1

Kl. 2

Ob.

Vln. I

Vln. II

Vln. III

Vla.

*ff*

*mf*

*ff*

*mf*

*ff*

*mf*

*ff*

*mf*

*ff*

*p*

*ppp*

*f*

*ppp*

*ppp*

*ppp*

*f*

*ppp*

*ppp*

*ppp*

*f*

*ppp*

*ppp*

*ppp*

*f*

*ppp*

*ppp*

♩ = 60



26

Fl. 1

*f* *mf* *ff*

Fl. 2

*f* *mf* *ff*

Ob. 1

*f* *mf* *ff*

Ob. 2

*f* *ff*

Kl. 1

*f* *mf* *ff*

Kl. 2

*f* *ff*

26

Ob.

26

Vln. I

*pp* *pp* *pp* *p* *fff* *ppp*

Vln. II

*pp* *pp* *pp* *p* *fff* *ppp*

Vln. III

*pp* *pp* *pp* *p* *fff* *ppp*

Vla.

*pp* *pp* *pp* *p* *fff* *ppp*

29

Fl. 1

*f* *ff*

Fl. 2

*f* *ff*

Ob. 1

*f* *ff*

Ob. 2

*f* *ff*

Kl. 1

*f* *ff*

Kl. 2

*f* *ff*

Ob.

*mf* *pp* *ppp*

Vln. I

*p* *fff* *ppp*

Vln. II

*p* *fff* *ppp*

Vln. III

*p* *fff* *ppp*

Vla.

*p* *fff* *ppp*

♩ = 53

◡

32

Fl. 1

*mf* *p* *fff* *p*

Fl. 2

*mf* *p* *fff* *p*

Ob. 1

*mf* *p* *fff* *p*

Ob. 2

*fff* *p*

Kl. 1

*mf* *p* *fff* *p*

Kl. 2

*fff* *p*

Ob.

*ff* *p*

32

Vln. I

*pp* *fff*

Vln. II

*pp* *fff*

Vln. III

*pp* *fff*

Vla.

*pp* *fff*

♩ = 60

34

Fl. 1

Fl. 2

Ob. 1

Ob. 2

Kl. 1

Kl. 2

Ob.

Vln. I

Vln. II

Vln. III

Vla.

*mf*

*mf*

*p*

*p*

*mf*

*pp*

*ff*

*pp*

*p*

*p*

*fff*

*ppp*

*p*

*fff*

*ppp*

*p*

*fff*

*ppp*

*p*

*fff*

*ppp*

♩ = 53



37

Fl. 1

*p pp*

Fl. 2

*p pp*

Ob. 1

Ob. 2

Kl. 1

*p pp*

Kl. 2

*p pp*

Ob.

37

*p mf mf pp fff*

6 5 5

Vln. I

Vln. II

Vln. III

Vla.



♩ = 73



39

Fl. 1

*fff* *mf* *mf*

Fl. 2

*fff* *mf* *mf*

Ob. 1

*fff* *mf* *mf*

Ob. 2

*fff* *mf*

Kl. 1

*fff* *mf* *mf*

Kl. 2

*fff* *mf*

Ob.

39 *pp* *pp* *ff* *p*

Vln. I

*p* *fff ppp ppp*

Vln. II

*p* *fff ppp ppp*

Vln. III

*p* *fff ppp ppp*

Vla.

*p* *fff ppp ppp*



♩ = 60

45

Fl. 1

Fl. 2

Ob. 1

Ob. 2

Kl. 1

Kl. 2

Ob.

Vln. I

Vln. II

Vln. III

Vla.

*ppp*

*ff*

*ppp*

*ff*

*ppp*

*ff*

*ff*

*ppp*

*f* *p* *pp* *f*

*ppp* *f* *p* *pp* *f*

*ppp* *f* *p* *pp* *f*

*ppp* *f* *p* *pp* *f*

9

48

Fl. 1

Fl. 2

Ob. 1

Ob. 2

Kl. 1

Kl. 2

Ob.

Vln. I

Vln. II

Vln. III

Vla.

*mf*

*mf*

*p*

*p*

*mf*

*mf*

*pp*

*ff*

*pp*

*p*

*p*

*fff* *ppp*

*fff* *ppp*

*fff* *ppp*

*p* *fff* *ppp*

6

5

5

7

♩ = 73

51

Fl. 1

Fl. 2

Ob. 1

Ob. 2

Kl. 1

Kl. 2

Ob.

Vln. I

Vln. II

Vln. III

Vla.

*p pp*

*p pp*

*mf*<sup>3</sup>

*mf*<sup>3</sup>

*p pp*

*mf*<sup>3</sup>

*p pp*

*mf*

*f* *pp* *mf* *mf* *pp* *fff*

*ppp*

*ppp*

*ppp*

*ppp*

① ②

3

6

5

5

♩ = 60

54

Fl. 1

*f fff mf ff ff*

Fl. 2

*f fff mf ff ff*

Ob. 1

*f fff mf ff ff*

Ob. 2

*f fff mf ff ff*

Kl. 1

*f fff mf ff ff*

Kl. 2

*f fff mf ff ff*

Ob.

54

*pp*

6

Vln. I

*p fff ppp*

Vln. II

*p fff ppp*

Vln. III

*p fff ppp*

Vla.

*p fff ppp*

♩ = 66

57

Fl. 1

*mf* *p* *pp* *fff*

Fl. 2

*mf* *p* *pp* *fff*

Ob. 1

*mf* *p* *pp* *fff*

Ob. 2

*pp* *fff*

Kl. 1

*mf* *p* *pp* *fff*

Kl. 2

*pp* *fff*

Ob.

*p* *p*

57

Vln. I

*pp* *fff* *p*

Vln. II

*pp* *fff* *p*

Vln. III

*pp* *fff*

Vla.

*pp* *fff* *p*

♩ = 93

60

Fl. 1

Fl. 2

Ob. 1

Ob. 2

Kl. 1

Kl. 2

Ob.

Vln. I

Vln. II

Vln. III

Vla.

*mf* *mf* *ppp*

*mf* *mf* *ppp*

*mf* *mf* *ff* *mf*<sup>3</sup>

*mf* *ff* *mf*<sup>3</sup>

*mf* *mf* *ff* *ppp* *mf*<sup>3</sup> ① ②

*mf* *ff* *ppp* *mf*<sup>3</sup>

*pp* *ff* *p*

*pp* *ppp* *f* *p* *ppp* *ppp*

*pp* *ppp* *f* *p* *ppp* *ppp*

*pp* *ppp* *f* *ppp* *ppp*

*pp* *ppp* *f* *p* *ppp* *ppp*



64

Fl. 1

*fff fff p mf p fff p*

Fl. 2

*fff fff p mf p fff p*

Ob. 1

*fff fff p mf p fff p*

Ob. 2

*fff fff p fff*

Kl. 1

*fff fff p mf p fff p*

Kl. 2

*fff fff p fff p*

Ob.

*p fff pp*

64

Vln. I

*ppp pp fff pp*

Vln. II

*ppp pp fff pp*

Vln. III

*ppp pp fff*

Vla.

*ppp pp fff pp*

## II. each its

♩ = 66

Flöte 1

Flöte 2

Oboe 1

Oboe 2

Klarinette 1 in B

Klarinette 2 in B

Solo Oboe

Violine I

Violine II

Violine III

Viola

*mf*

*mf*

*mf*

*mf*

*mf*

*mf*

*p* *mf* *pp* *f* *ppp* *ppp* *mf*

*f* *ppp* *pp* *ppp*

*pp* *f* *ppp* *pp* *ppp*

*ppp* *ppp*

*pp* *ppp* *ppp*

♩ = 46

♩ = 60

4

Fl. 1

Fl. 2

Ob. 1

Ob. 2

Kl. 1

Kl. 2

Ob.

Vln. I

Vln. II

Vln. III

Vla.

*pp*

*pp*

*pp*

*pp*

*pp*

*ff* *ppp* *ff* *f* *pp* *f* *pp* *f*

*ff* *ppp* *f* *pp* *f*

*ppp* *f* *pp*

*ppp* *f*

*ff* *ppp* *f* *f*

7

Fl. 1

Fl. 2

Ob. 1

Ob. 2

Kl. 1

Kl. 2

*fff*

*fff*

Ob.

*pp* *mf* *p* *ff* *ppp* *f*

5 5 5

7

Vln. I

Vln. II

Vln. III

Vla.

*pp* *mf* *fff* *ppp*

*pp* *fff* *ppp*

*mf* *fff* *ppp*

*fff* *ppp*

♩ = 79

10

Fl. 1 *pp* *ppp*

Fl. 2 *pp* *fff* *pp*

Ob. 1 *pp* *pp*

Ob. 2 *pp* *ppp*

Kl. 1 *fff* *ppp pp*

Kl. 2 *pp* *pp*

10

Ob. *pp* *p* *pp* *mf* *p* *pp* *fff*

10

Vln. I *pp* *mf* *fff* *p* *pp*

Vln. II *pp* *fff* *pp*

Vln. III *mf* *fff* *pp*

Vla. *fff* *p* *pp*

♩ = 85

14

Fl. 1

Fl. 2

Ob. 1

Ob. 2

Kl. 1

Kl. 2

Ob.

Vln. I

Vln. II

Vln. III

Vla.

Musical score for woodwinds and strings, measures 14-28. The score is written for Flute 1, Flute 2, Oboe 1, Oboe 2, Clarinet 1, Clarinet 2, Oboe, Violin I, Violin II, Violin III, and Viola. The tempo is marked as ♩ = 85. The key signature is one sharp (F#). The time signature is 4/4, with a 3/4 section starting at measure 24. Dynamics include *mf*, *ff*, *pp*, *f*, *p*, *fff*, *ppp*, and *f*. The Oboe part features complex rhythmic patterns and slurs. The string parts are mostly sustained notes with dynamic markings.

28

17

Fl. 1

*pp*

Fl. 2

*fff* *p*

Ob. 1

*pp* *p*

Ob. 2

Kl. 1

*fff* *p*

Kl. 2

*p* *p*

Ob.

*p* *pp* *f* *mf* *p* *ff* *ppp* *p* *ppp*

6 7 3 5

Vln. I

*f* *mf* *fff* *ppp*

Vln. II

*fff* *ppp* *ppp*

Vln. III

*fff* *ppp* *ppp*

Vla.

*f* *mf* *fff* *ppp* *ppp*

29

♩ = 93

20

Fl. 1

*pp* *mf* *pp*

Fl. 2

*pp* *mf*

Ob. 1

*pp*

Ob. 2

*pp*

Kl. 1

*pp*

Kl. 2

*mf* *pp* *pp*

Ob.

*pp* *p* *mf* *pp* *p* *pp* *fff* *p* *pp*

20

Vln. I

*pp* *pp* *pp* *p* *pp*

Vln. II

*pp*

Vln. III

*pp*

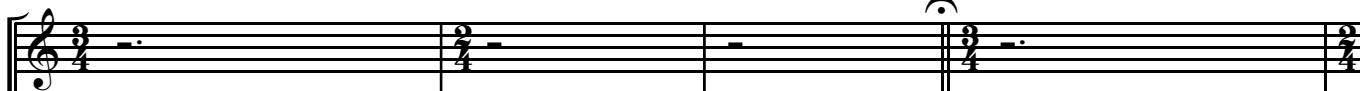
Vla.

*pp* *pp* *pp* *p* *pp*

30



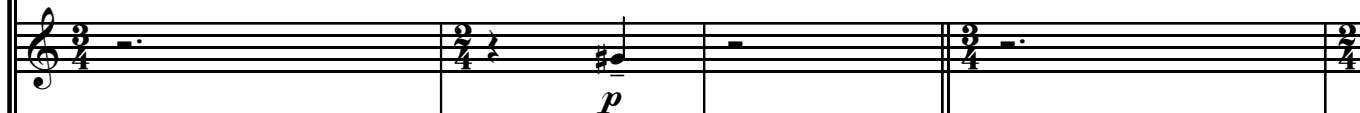
Fl. 1



Fl. 2



Ob. 1



Ob. 2



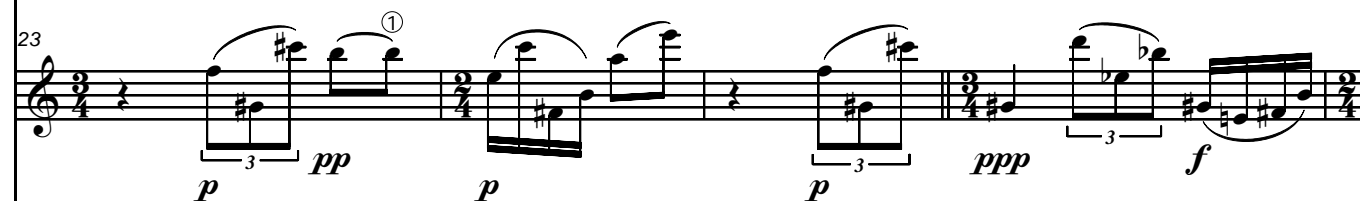
Kl. 1



Kl. 2



Ob.



Vln. I



Vln. II



Vln. III

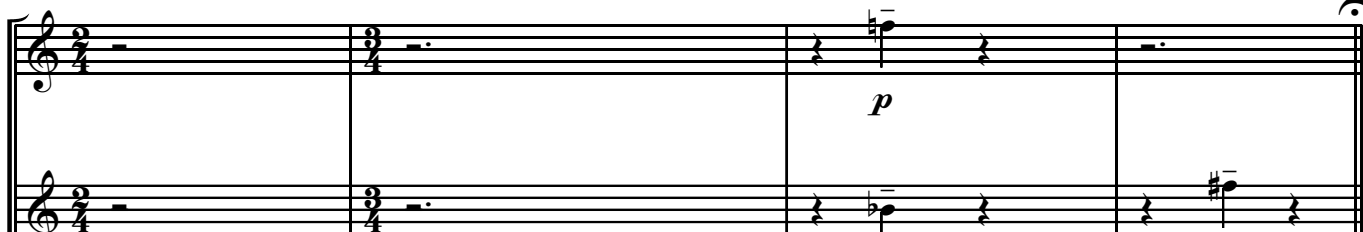


Vla.

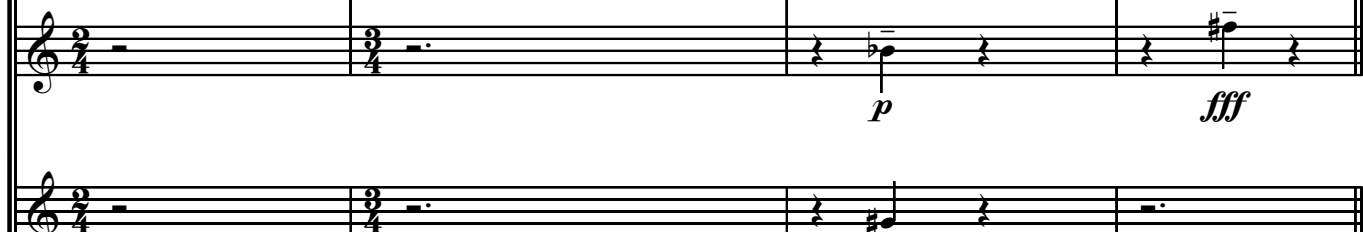


27

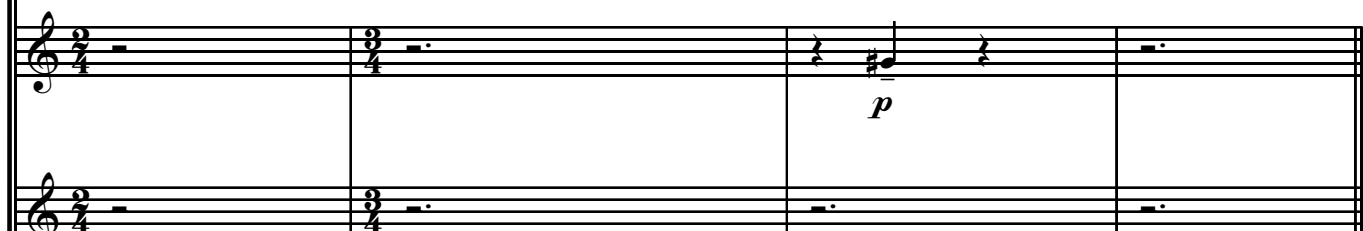
Fl. 1



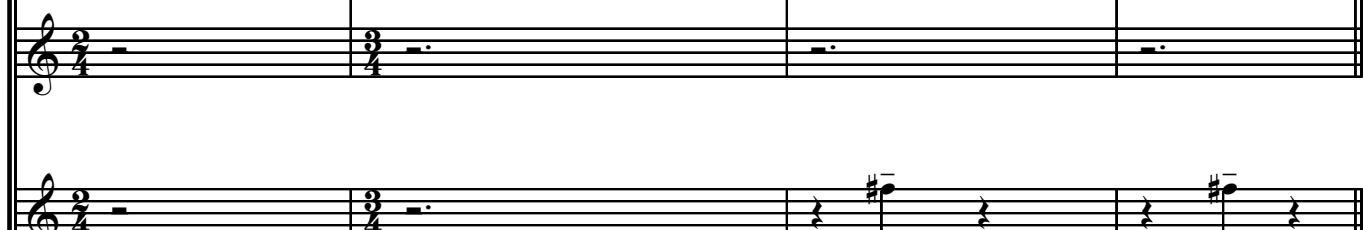
Fl. 2



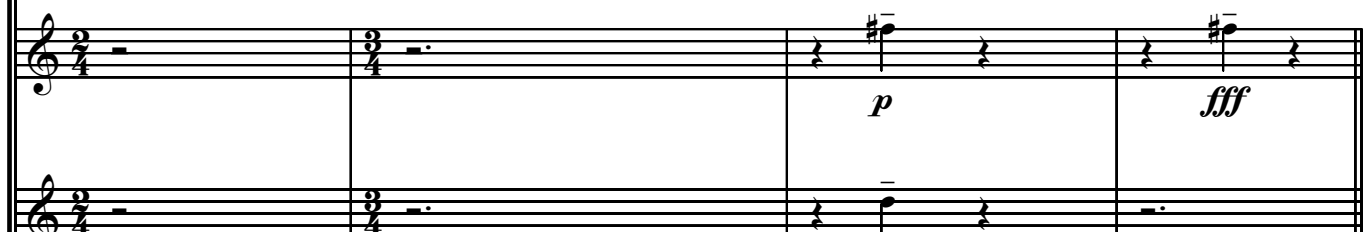
Ob. 1



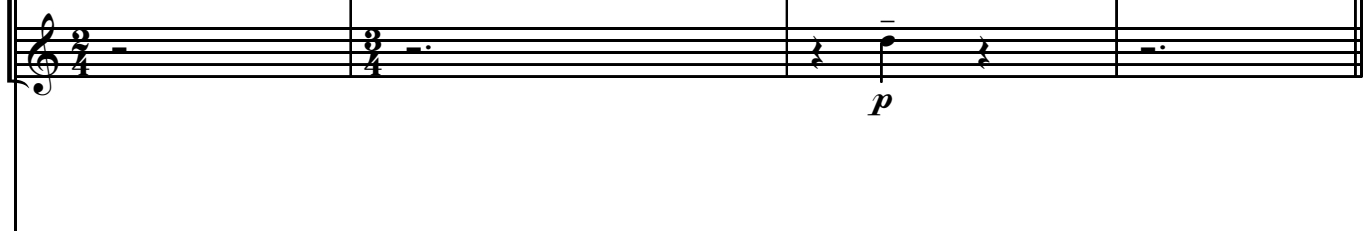
Ob. 2



Kl. 1

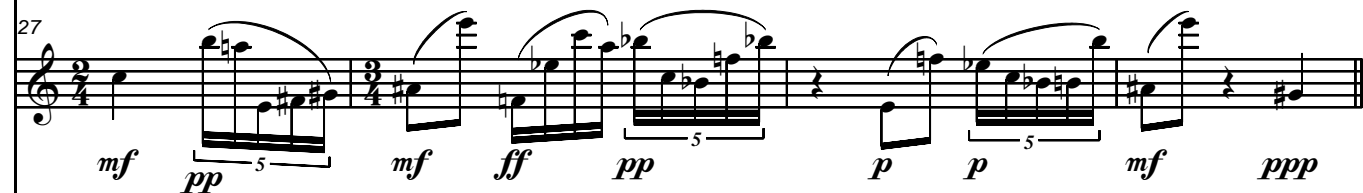


Kl. 2



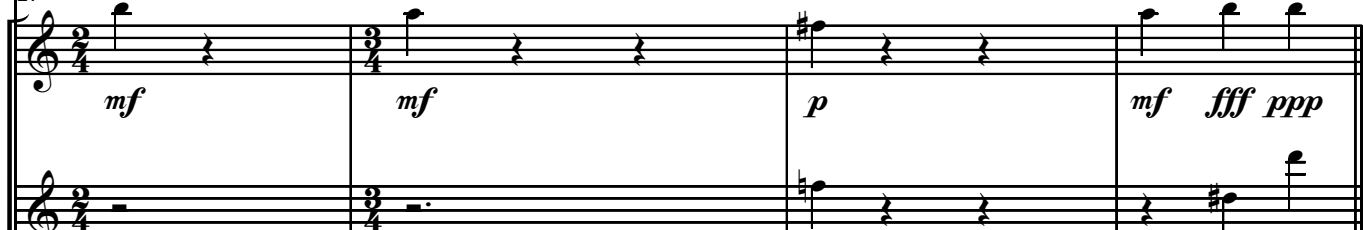
27

Ob.

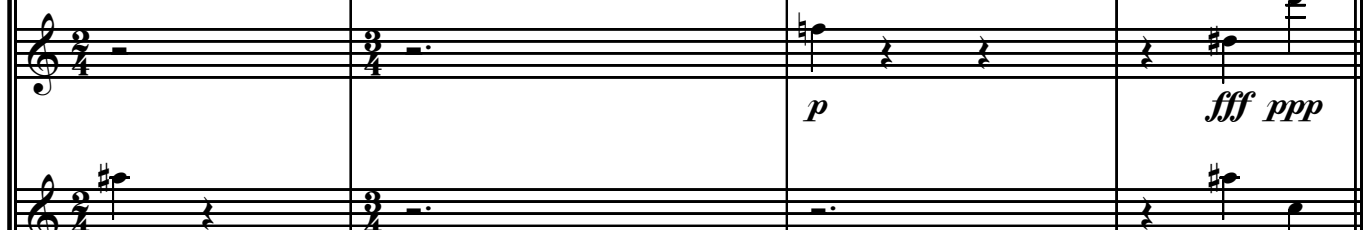


27

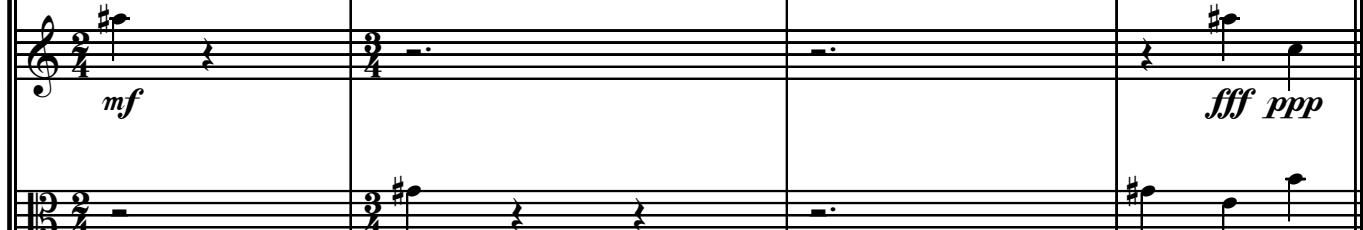
Vln. I



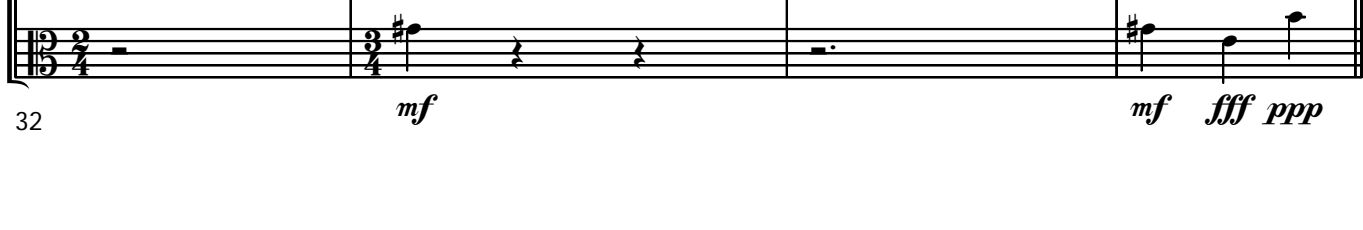
Vln. II



Vln. III



Vla.



32

♩ = 60

♩ = 106

31

Fl. 1

Fl. 2

Ob. 1

Ob. 2

Kl. 1

Kl. 2

Ob.

Vln. I

Vln. II

Vln. III

Vla.

*mf*

*p*

*mf*

*pp*

*mf*

*p*

*mf*

*pp*

*mf*

*p*

*mf*

*pp*

*mf*

*fff*

*ppp*

*pp*

*mf*

*pp*

*p*

*pp*

*fff*

*ppp*

*pp*

*ppp*

*pp*

*fff*

*ppp*

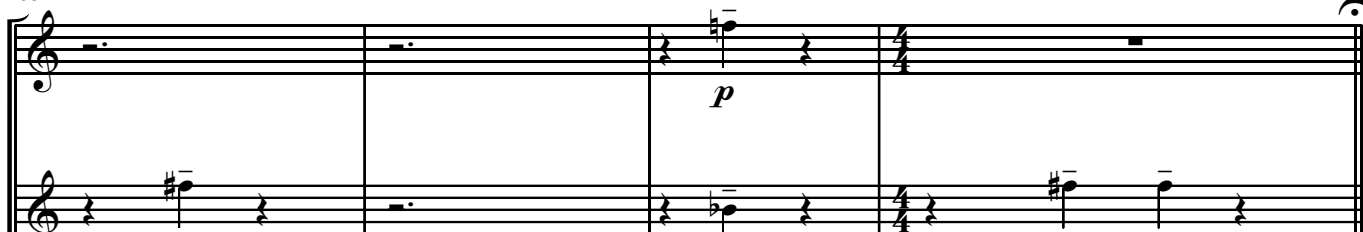
*pp*

*fff*

*ppp*

*pp*

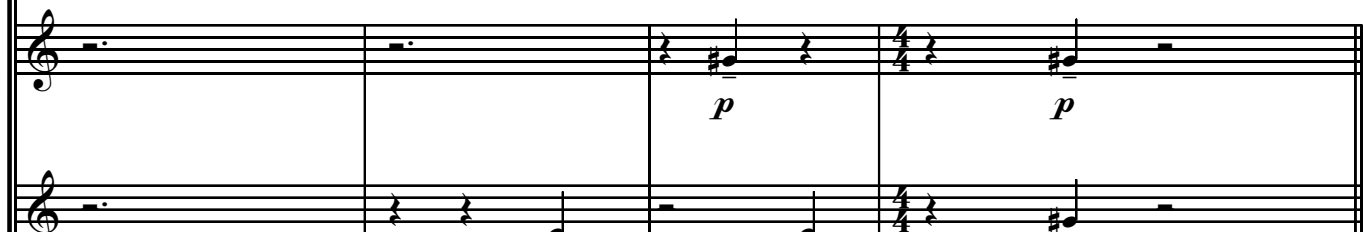
Fl. 1



Fl. 2



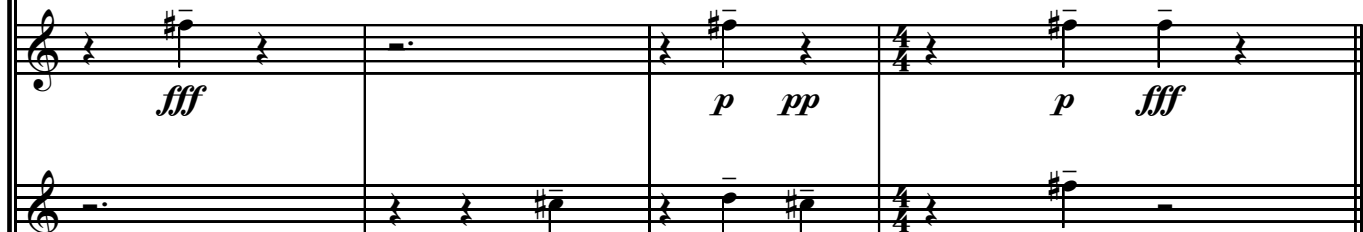
Ob. 1



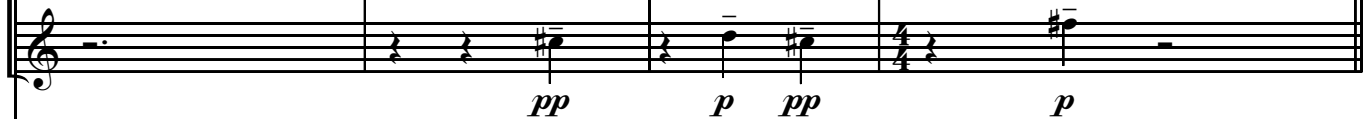
Ob. 2



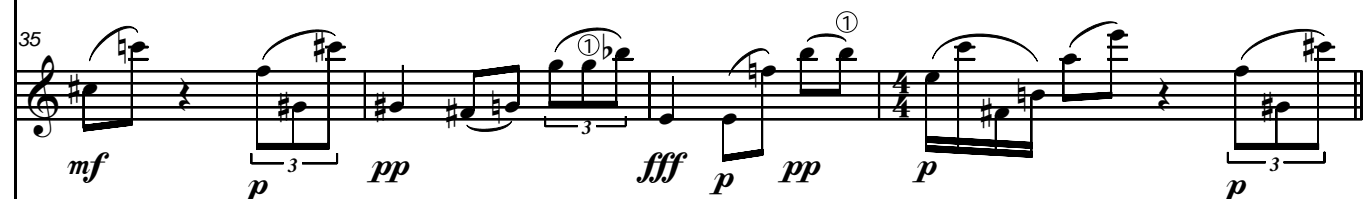
Kl. 1



Kl. 2



Ob.



Vln. I



Vln. II



Vln. III



Vla.



♩ = 93

39

Fl. 1

Fl. 2

Ob. 1

Ob. 2

Kl. 1

Kl. 2

Ob.

Vln. I

Vln. II

Vln. III

Vla.

*mf*

*pp*

*pp*

*mf*

*ppp*

*f*

*pp*

*mf*

*p*

*mf*

*pp*

*fff*

*ppp*

*pp*

*pp*

*pp*

*ppp*

*ppp*

*ppp*

*pp*

*pp*

*pp*

♩ = 53

42

Fl. 1

*pp* *mf* *mf* *pp*

Fl. 2

*pp* *mf* *mf* *pp*

Ob. 1

*pp* *pp* *mf*

Ob. 2

*mf*

Kl. 1

*mf* *pp*

Kl. 2

*pp* *mf* *mf*

Ob.

42

*pp* *f* *pp* *mf* *pp* *p* *mf* *p*

Vln. I

*f* *p* *pp* *pp*

Vln. II

*f* *p* *pp*

Vln. III

*f*

Vla.

*f* *pp* *pp*

36

♩ = 79

Fl. 1

Fl. 2

Ob. 1

Ob. 2

Kl. 1

Kl. 2

Ob.

Vln. I

Vln. II

Vln. III

Vla.

*fff*

*ppp*

*fff*

*ppp*

*mf*

*mf*

*fff*

*mf*

*ppp*

*mf*

*f*

*mf*

*p*

*ff*

*ppp*

*f*

*pp*

*fff ppp*

*f*

*ppp*

*fff ppp*

*f*

*ppp*

*fff ppp*

*ppp*

*f mf*

*fff ppp*

*ppp*

♩ = 53

♩ = 106

Fl. 1

Fl. 2

Ob. 1

Ob. 2

Kl. 1

Kl. 2

pp

fff

p

pp

fff

pp

fff

p

pp

pp

Ob.

pp

f

fff

pp

ff

p

f

mf

p

ff

Vln. I

Vln. II

Vln. III

Vla.

f

pp

p

f

mf

f

fff

p

f

fff

pp

f

mf



51

Fl. 1

Fl. 2

Ob. 1

Ob. 2

Kl. 1

Kl. 2

*fff*

*ff*

*ff*

*fff*

51

Ob.

*fff* *pp* *mf* *5* *ff* *p* *5* *ff* *ppp* *pp* *ff* *f* *5* *f* *3*

51

Vln. I

Vln. II

Vln. III

Vla.

*fff* *pp* *fff* *ppp* *pp* *f*

*fff* *pp* *fff* *ppp* *pp* *f*

*fff* *pp* *fff* *ppp*

*fff* *pp* *fff* *ppp*

♩ = 153

54

Fl. 1

Fl. 2

Ob. 1

Ob. 2

Kl. 1

Kl. 2

Ob.

Vln. I

Vln. II

Vln. III

Vla.

40

This musical score page contains staves for woodwind and string instruments. The woodwind section includes Flute 1, Flute 2, Oboe 1, Oboe 2, Clarinet 1, Clarinet 2, and a solo Oboe. The string section includes Violin I, Violin II, Violin III, and Viola. The score is in 3/4 time with a tempo of 153 beats per minute. The key signature has one sharp (F#). The page is divided into two systems. The first system covers measures 54 to 57. The second system covers measures 54 to 57, with a measure number '40' at the beginning. The woodwind parts are mostly static, with some dynamics like *p*, *pp*, and *fff*. The solo Oboe part is more active, featuring a melodic line with various dynamics including *fff*, *ppp*, *p*, *ppp*, *pp*, *ppp*, *pp*, *p*, *pp*, *mf*, *p*, and *pp*. The string parts provide harmonic support with sustained notes and some dynamics like *ppp*, *p*, *ppp*, *pp*, *ppp*, *pp*, *mf*, *fff*, *p*, and *pp*.

♩ = 113

58

Fl. 1

Fl. 2

Ob. 1

Ob. 2

Kl. 1

Kl. 2

Ob.

Vln. I

Vln. II

Vln. III

Vla.

*p* *fff*

*p* *fff*

*pp*

*p*

*pp*

*p*

*pp*

*p* *fff*

*pp*

*p*

*p* *pp*

*p*

*p* *ff*

*ppp*

*ff*

*mf*

*fff* *p*

*ff* *ppp*

*fff*

*ppp*

*fff*

*ppp*

*fff* *p*

*ff* *ppp*

61

Fl. 1

*pp*

*mf*

Fl. 2

*pp*

Ob. 1

*pp*

*mf*

*pp*

Ob. 2

*mf*

Kl. 1

Kl. 2

*pp*

*mf*

Detailed description: This block contains the musical notation for measures 61 through 64 for the Flute 1, Flute 2, Oboe 1, Oboe 2, Clarinet 1, and Clarinet 2 staves. The key signature has one flat (B-flat). The time signature changes from 4/4 to 5/4 at measure 63 and back to 4/4 at measure 64. Dynamics include *pp* (pianissimo), *mf* (mezzo-forte), and *pp* (pianissimo) at the end of the section.

61

Ob.

*pp ppp*

*pp*

*mf*

*f*

*ppp*

*ppp*

*mf*

*ff*

*pp*

Detailed description: This block contains the musical notation for measure 61 for the Oboe staff. The measure is divided into two parts by a bar line. The first part (measures 61-62) is in 4/4 time and features a series of eighth and sixteenth notes with various dynamics: *pp ppp*, *pp*, *mf*, *f*, *ppp*, and *ppp*. The second part (measures 63-64) is in 5/4 time and continues the melodic line with dynamics *mf*, *ff*, and *pp*. Fingerings (5, 5, 7, 3) are indicated for some notes.

61

Vln. I

*pp*

*f*

*ppp*

*pp*

*ppp*

*ff*

*p*

Vln. II

*pp*

*f*

*ppp*

*pp*

*ppp*

*p*

Vln. III

*f*

*ppp*

*ppp*

Vla.

*f*

*ppp*

*ppp*

*ff*

42

Detailed description: This block contains the musical notation for measures 61 through 64 for the Violin I, Violin II, Violin III, and Viola staves. The key signature has one flat (B-flat). The time signature changes from 4/4 to 5/4 at measure 63 and back to 4/4 at measure 64. Dynamics include *pp* (pianissimo), *f* (forte), *ppp* (pianississimo), *ff* (fortissimo), and *p* (piano). The Viola staff is in alto clef.

♩ = 100

64

Fl. 1

Fl. 2

Ob. 1

Ob. 2

Kl. 1

Kl. 2

*fff*

*fff*

Ob.

64

*pp*

*f*

*mf*

*ff*

*p*

*ff*

*ppp*

*mf*

*mf*

*pp*

Vln. I

*pp*

*f*

*fff*

*ppp*

*mf*

*pp*

Vln. II

*pp*

*fff*

*ppp*

*mf*

*pp*

Vln. III

*fff*

*ppp*

Vla.

*f*

*fff*

*ppp*

♩ = 79

68

Fl. 1

Fl. 2

Ob. 1

Ob. 2

Kl. 1

Kl. 2

Ob.

Vln. I

Vln. II

Vln. III

Vla.

44

Musical score for woodwinds and strings, measures 68-71. The score is written for Flute 1, Flute 2, Oboe 1, Oboe 2, Clarinet 1, Clarinet 2, Oboe, Violin I, Violin II, Violin III, and Viola. The tempo is marked as ♩ = 79. The key signature is one sharp (F#). The dynamics range from *fff* to *ppp*. The woodwinds play sustained notes with dynamic changes, while the strings play a rhythmic pattern of eighth notes.

Measures 68-71:

- Fl. 1: *p*, *mf*, *pp*, *mf*
- Fl. 2: *ff*, *pp*, *mf*, *pp*
- Ob. 1: *ff*, *p*, *pp*, *pp*
- Ob. 2: *p*
- Kl. 1: *p*, *pp*, *mf*, *pp*
- Kl. 2: *p*, *mf*, *pp*, *mf*
- Ob.: *ff*, *fff*, *pp*, *pp*, *p*, *mf* (7), *pp*, *ppp*, *mf*
- Vln. I: *fff*, *pp*, *pp*, *pp*, *ppp*
- Vln. II: *fff*, *pp*, *pp*, *pp*, *ppp*
- Vln. III: *fff*, *pp*, *pp*, *ppp*
- Vla.: *fff*, *pp*, *pp*, *ppp*

♩ = 66

72

Fl. 1 *p* *p* *mf*

Fl. 2 *p*

Ob. 1 *pp* *p*

Ob. 2 *pp* *p*

Kl. 1 *p* *p* *pp*

Kl. 2 *pp* *mf*

72

Ob. <sup>①</sup> *pp* *p* *f* *ppp* *mf* *p* *ppp* *pp* *p* *mf*

72

Vln. I *p* *p* *ppp* *mf* *ppp* *pp* *pp*

Vln. II *p* *p* *ppp* *ppp*

Vln. III *p* *ppp* *ppp*

Vla. *p* *ppp* *mf* *ppp* *pp* *pp*

♩ = 85

76

Fl. 1 *pp* *fff* *p*

Fl. 2 *fff*

Ob. 1 *pp*

Ob. 2 *fff* *pp*

Kl. 1 *fff* *fff* *pp* *p*

Kl. 2 *pp*

76

Ob. *pp* *p* *pp* *mf* *p* *pp* *fff* *pp* *fff* *p*

76

Vln. I *pp* *mf* *fff* *p* *pp* *p*

Vln. II *pp* *fff* *pp* *fff* *fff* *p*

Vln. III *mf* *fff* *pp*

Vla. *fff* *p* *pp* *fff* *fff*

46



♩ = 100

80

Fl. 1

Fl. 2

Ob. 1

Ob. 2

Kl. 1

Kl. 2

Ob.

Vln. I

Vln. II

Vln. III

Vla.

Ob. 80

*mf* *pp* *mf* *ff* *ppp* *ff* *pp*

80

*pp*

*mf*

*ff*

*ppp*

*pp*

*pp*

*ppp*

*pp*

*mf*

*ppp*

*pp*

*ff*

*ppp*

♩ = 126

83

Fl. 1

Fl. 2

Ob. 1

Ob. 2

Kl. 1

Kl. 2

Ob.

Vln. I

Vln. II

Vln. III

Vla.

48

87

Fl. 1

Fl. 2

Ob. 1

Ob. 2

Kl. 1

Kl. 2

Ob.

Vln. I

Vln. II

Vln. III

Vla.

87

*mf* *ppp*

*pp*

*pp*

*mf* *ppp*

87

*mf* *pp* *fff* *p* *ff* *fff* *ppp* *pp* *ppp*

5 ① 6 3 3

87

*p* *ppp*

*ppp*

*ppp*

*p* *ppp*

♩ = 126

### III. afar dim hair

Flöte 1

Flöte 2

Oboe 1

Oboe 2

Klarinette 1 in B

Klarinette 2 in B

Solo Oboe

Violine I

Violine II

Violine III

Viola

*pp*

*p*

*ff*

*pp*

*ppp*

*pp*

*ppp*

*ppp*

*ff*

*pp*

*ppp*

*ppp*

*ff*

*pp*

*ppp*

*ppp*

*ff*

*pp*

*ppp*

*p*

*pp*

3

Fl. 1

*p* *pp* *pp*

Fl. 2

*pp* *p* *pp*

Ob. 1

*pp*

Ob. 2

*pp* *fff* *ppp*

Kl. 1

*pp* *pp* *pp*

Kl. 2

*pp* *pp*

Ob.

*p* *pp* *ppp* *pp* *pp*

Vln. I

*pp*

Vln. II

*p* *pp* *p* *pp*

Vln. III

*p* *pp* *pp* *pp*

Vla.

*p* *pp* *pp* *p* *pp*

51

Detailed description of the musical score: The score is for measures 50 and 51. Measure 50 starts with a '3' above the Flute 1 staff. Flute 1 plays a triplet of eighth notes (F4, E4, D4) marked *p*, followed by a half rest marked *pp*. Flute 2 has a half rest. Oboe 1 has a half rest. Oboe 2 plays a half note (F4) marked *pp*, followed by a half note (E4) marked *fff*, and a half note (D4) marked *ppp*. Clarinet 1 plays a half note (F4) marked *pp*, followed by a half note (E4) marked *pp*. Clarinet 2 has a half rest. Oboe plays a triplet of eighth notes (F4, E4, D4) marked *p*, followed by a half note (F4) marked *pp*, a half note (G4) marked *ppp*, a half note (F4) marked *pp*, and a half note (E4) marked *pp*. Violin I has a half rest. Violin II plays a half note (F4) marked *p*, followed by a half note (E4) marked *pp*. Violin III plays a half note (F4) marked *p*, followed by a half note (E4) marked *pp*. Viola plays a half note (F4) marked *p*, followed by a half note (E4) marked *pp*. Measure 51 continues the patterns. Flute 1 has a half rest marked *pp*. Flute 2 has a half note (F#4) marked *pp*, followed by a half note (E4) marked *p*, and a half note (D4) marked *pp*. Oboe 1 has a half rest. Oboe 2 has a half rest. Clarinet 1 has a half rest. Clarinet 2 has a half note (F#4) marked *pp*. Oboe has a half note (F#4) marked *pp*, followed by a half note (G4) marked *ppp*, a half note (F#4) marked *pp*, and a half note (E4) marked *pp*. Violin I has a half note (F#4) marked *pp*. Violin II has a half note (F4) marked *p*, followed by a half note (E4) marked *pp*. Violin III has a half note (F#4) marked *pp*. Viola has a half note (F#4) marked *pp*, followed by a half note (G4) marked *p*, and a half note (F#4) marked *pp*. Measure 51 ends with a repeat sign.

♩ = 113

6

Fl. 1

*pp* *pp* *mf* *ff*

Fl. 2

*ff* *pp* *p*

Ob. 1

*ff* *ff* *pp* *p*

Ob. 2

*pp* *ff* *ff* *p*

Kl. 1

*pp* *ff* *pp*

Kl. 2

*p*

6

Ob.

*pp* *pp* *mf* *ff* *mf* *ff* *pp* *p*

6

Vln. I

*pp* *p*

Vln. II

*pp* *mf* *pp* *p*

Vln. III

*mf* *pp* *p*

Vla.

*pp* *ff* *pp* *mf* *mf* *p*

♩ = 153

9

Fl. 1 *mf* *pp*

Fl. 2 *fff* *p fff p pp*

Ob. 1 *fff* *fff* *fff*

Ob. 2 *fff* *fff pp pp fff f*

Kl. 1 *fff* *fff pp pp*

Kl. 2 *ppp fff pp pp pp pp*

Ob. 9 *mf fff ppp fff pp pp pp pp f* ①

Vln. I *fff ppp pp p pp*

Vln. II *pp p fff p pp*

Vln. III *ppp pp pp f*

Vla. *mf ppp pp pp fff p pp f*

This musical score page contains measures 13 through 16 of a symphony. The instrumentation includes Flute 1 and 2, Oboe 1 and 2, Clarinet 1 and 2, Oboe Solo, Violin I, II, and III, and Viola. The score is written in treble clef with a key signature of one sharp (F#). The time signature changes from 4/4 to 3/4 in measure 14 and back to 4/4 in measure 15. The dynamics range from *ppp* (pianississimo) to *fff* (fortississimo). The Oboe Solo part features a melodic line with a triplet in measure 15 and a circled note in measure 16. The woodwinds and strings provide harmonic support with various textures and dynamics.



[illegible]

♩ = 40

♩ = 93

19

Fl. 1

Fl. 2

Ob. 1

Ob. 2

Kl. 1

Kl. 2

Ob.

Vln. I

Vln. II

Vln. III

Vla.

*f*

*pp*

*p*

*pp*

*p*

*ppp* *mf*

*mf*

*ppp* *pp* *ppp* *fff*

*ppp* *mf*

*pp* *mf* *pp* *ppp* *fff*

*mf*

*ppp*

*ppp* *fff*

19

*p*

*f*

*ppp*

*mf*

*pp*

*ppp*

*pp*

*mf*

*pp*

*ppp*

19

*ppp* *mf*

*ppp* *mf*

*ppp*

*p*

*f*

*mf*

*mf*

*mf*

*ppp* *mf* *ppp*

*f*

*ppp* *mf* *pp*

*ppp* *mf* *pp* *ppp*

♩ = 106

23

Fl. 1

Fl. 2

Ob. 1

Ob. 2

Kl. 1

Kl. 2

Ob.

Vln. I

Vln. II

Vln. III

Vla.

*pp*

*pp*

*pp*

*mf*

*pp*

*pp*

*f*

*mf*

*pp*

*pp*

*mf*

*f*

*pp*

*mf*

*mf*

*f*

23

*f*

*pp*

*mf*

*mf*

*pp*

*mf*

*pp*

*mf*

*pp*

*mf*

23

*pp*

*mf*

*mf*

*pp*

*mf*

*pp*

*pp*

*pp*

*mf*

*pp*

*mf*

*f*

*mf*

*pp*

*mf*

Fl. 1 *p*

Fl. 2 *fff* *p* *pp*

Ob. 1 *fff* *p* *ff*

Ob. 2 *fff* *fff*

Kl. 1 *fff* *pp*

Kl. 2 *p* *ppp* *pp*

Ob. *fff* *p* *pp* *p* *pp* *ff* *fff* *ppp* *ppp*

Vln. I *fff* *p* *pp* *ppp* *pp*

Vln. II *p* *pp* *fff* *mf* *ppp*

Vln. III *p* *p* *pp* *ppp* *mf* *ppp*

Vla. *p* *pp* *pp* *ff* *ppp* *pp*

♩ = 85

29

Fl. 1

Fl. 2

Ob. 1

Ob. 2

Kl. 1

Kl. 2

Ob.

Vln. I

Vln. II

Vln. III

Vla.

*f*

*pp*

*mf*

*p*

*mf*

*p*

*pp*

*mf*

*p*

*mf*

*mf*

*f*

*mf*

*pp*

*mf*

*p*

*f*

*mf*

*pp*

*pp*

*mf*

*mf*

*p*

*mf*

*p*

*ppp*

29

*mf*

*ppp*

*p*

*ppp*

*pp*

*p*

*pp*

*mf*

*pp*

29

*mf*

*ppp*

*p*

*ppp*

*mf*

*p*

*pp*

*mf*

*ppp*

*ppp*

*p*

*mf*

*mf*

*p*

*f*

*ppp*

*mf*

*ppp*

*pp*

*p*

*pp*

*mf*

*pp*

Fl. 1

Fl. 2

Ob. 1

Ob. 2

Kl. 1

Kl. 2

Ob.

Vln. I

Vln. II

Vln. III

Vla.

This musical score page contains measures 38 through 42 of a symphony. The instrumentation includes two flutes (Fl. 1, Fl. 2), two oboes (Ob. 1, Ob. 2), two clarinets (Kl. 1, Kl. 2), an additional oboe (Ob.), three violins (Vln. I, Vln. II, Vln. III), and a double bass (Vla.).

**Measure 38:** Fl. 1 has a whole rest. Fl. 2 has a whole rest. Ob. 1 has a half note G4 (p). Ob. 2 has a half note F#4 (mf). Kl. 1 has a whole rest. Kl. 2 has a half note G4 (p), a half note A4 (mf), and a half note B4 (ppp). Ob. (3rd) has a half note G4 (p), a half note A4 (ppp), a half note B4 (pp), a half note C5 (ppp), a half note D5 (pp), a half note E5 (ppp), a half note F5 (mf), and a half note G5 (ff). Vln. I has a half note G4 (p), a half note A4 (mf), and a half note B4 (ppp). Vln. II has a whole rest. Vln. III has a half note G4 (p), a half note A4 (ppp), a half note B4 (pp), and a half note C5 (ppp). Vla. has a half note G4 (mf), a half note A4 (ppp), a half note B4 (pp), a half note C5 (ppp), and a half note D5 (p).

**Measure 39:** Fl. 1 has a whole rest. Fl. 2 has a whole rest. Ob. 1 has a half note G4 (pp). Ob. 2 has a half note G4 (pp). Kl. 1 has a whole rest. Kl. 2 has a half note G4 (pp), a half note A4 (ppp), a half note B4 (pp), and a half note C5 (ppp). Ob. (3rd) has a half note G4 (pp), a half note A4 (ppp), a half note B4 (pp), a half note C5 (ppp), a half note D5 (pp), a half note E5 (ppp), a half note F5 (mf), and a half note G5 (ff). Vln. I has a half note G4 (pp), a half note A4 (ppp), a half note B4 (pp), and a half note C5 (ppp). Vln. II has a half note G4 (pp), a half note A4 (p), and a half note B4 (pp). Vln. III has a half note G4 (pp), a half note A4 (ppp), a half note B4 (pp), and a half note C5 (ppp). Vla. has a half note G4 (pp), a half note A4 (ppp), a half note B4 (pp), a half note C5 (ppp), and a half note D5 (p).

**Measure 40:** Fl. 1 has a whole rest. Fl. 2 has a whole rest. Ob. 1 has a whole rest. Ob. 2 has a whole rest. Kl. 1 has a whole rest. Kl. 2 has a half note G4 (pp), a half note A4 (ppp), a half note B4 (pp), and a half note C5 (ppp). Ob. (3rd) has a half note G4 (pp), a half note A4 (ppp), a half note B4 (pp), a half note C5 (ppp), a half note D5 (pp), a half note E5 (ppp), a half note F5 (mf), and a half note G5 (ff). Vln. I has a half note G4 (pp), a half note A4 (ppp), a half note B4 (pp), and a half note C5 (ppp). Vln. II has a half note G4 (pp), a half note A4 (p), and a half note B4 (pp). Vln. III has a half note G4 (pp), a half note A4 (ppp), a half note B4 (pp), and a half note C5 (ppp). Vla. has a half note G4 (pp), a half note A4 (ppp), a half note B4 (pp), a half note C5 (ppp), and a half note D5 (p).

**Measure 41:** Fl. 1 has a whole rest. Fl. 2 has a whole rest. Ob. 1 has a whole rest. Ob. 2 has a whole rest. Kl. 1 has a whole rest. Kl. 2 has a half note G4 (pp), a half note A4 (ppp), a half note B4 (pp), and a half note C5 (ppp). Ob. (3rd) has a half note G4 (pp), a half note A4 (ppp), a half note B4 (pp), a half note C5 (ppp), a half note D5 (pp), a half note E5 (ppp), a half note F5 (mf), and a half note G5 (ff). Vln. I has a half note G4 (pp), a half note A4 (ppp), a half note B4 (pp), and a half note C5 (ppp). Vln. II has a half note G4 (pp), a half note A4 (p), and a half note B4 (pp). Vln. III has a half note G4 (pp), a half note A4 (ppp), a half note B4 (pp), and a half note C5 (ppp). Vla. has a half note G4 (pp), a half note A4 (ppp), a half note B4 (pp), a half note C5 (ppp), and a half note D5 (p).

**Measure 42:** Fl. 1 has a whole rest. Fl. 2 has a whole rest. Ob. 1 has a whole rest. Ob. 2 has a whole rest. Kl. 1 has a whole rest. Kl. 2 has a half note G4 (pp), a half note A4 (ppp), a half note B4 (pp), and a half note C5 (ppp). Ob. (3rd) has a half note G4 (pp), a half note A4 (ppp), a half note B4 (pp), a half note C5 (ppp), a half note D5 (pp), a half note E5 (ppp), a half note F5 (mf), and a half note G5 (ff). Vln. I has a half note G4 (pp), a half note A4 (ppp), a half note B4 (pp), and a half note C5 (ppp). Vln. II has a half note G4 (pp), a half note A4 (p), and a half note B4 (pp). Vln. III has a half note G4 (pp), a half note A4 (ppp), a half note B4 (pp), and a half note C5 (ppp). Vla. has a half note G4 (pp), a half note A4 (ppp), a half note B4 (pp), a half note C5 (ppp), and a half note D5 (p).

♩ = 146

43

Fl. 1

Fl. 2

Ob. 1

Ob. 2

Kl. 1

Kl. 2

Ob.

Vln. I

Vln. II

Vln. III

Vla.



♩ = 140

48

Fl. 1

Fl. 2

Ob. 1

Ob. 2

Kl. 1

Kl. 2

Ob.

Vln. I

Vln. II

Vln. III

Vla.

Musical score for woodwinds and strings, measures 48-51. The score is written for Flute 1, Flute 2, Oboe 1, Oboe 2, Clarinet 1, Clarinet 2, Oboe, Violin I, Violin II, Violin III, and Viola. The tempo is marked as ♩ = 140. The key signature has one sharp (F#) and the time signature is 3/4. The score includes various dynamics such as *pp*, *ff*, *mf*, *f*, *fff*, *ppp*, and *p*. The Oboe part features a melodic line with a triplet in measure 51. The string parts provide harmonic support with sustained notes and some movement in the lower registers.

♩ = 146

52

Fl. 1

Fl. 2

Ob. 1

Ob. 2

Kl. 1

Kl. 2

Ob.

Vln. I

Vln. II

Vln. III

Vla.

64

Fl. 1

Fl. 2

Ob. 1

Ob. 2

Kl. 1

Kl. 2

Ob.

Vln. I

Vln. II

Vln. III

Vla.

*pp* *mf* *pp* *f*

*pp* *mf* *pp* *f*

*p* *p* *mf* *ff* *pp*

*ff* *mf* *pp*

*pp* *p* *pp* *mf* *mf* *pp*

*mf* *pp* *mf*

*pp* *p* *mf* *p* *pp* *ff* *mf* *pp* *f*

*pp* *mf* *pp* *pp* *ff* *mf* *f*

*mf* *p* *mf* *pp* *mf*

*p* *mf* *p* *pp* *mf* *pp* *ff*

Fl. 1

Fl. 2

Ob. 1

Ob. 2

Kl. 1

Kl. 2

Ob.

Vln. I

Vln. II

Vln. III

Vla.

*mf*

*fff*

*f*

*mf*

*p*

*ff*

*fff*

*pp*

*mf*

*fff*

*f*

*mf*

*fff*

*pp*

*mf*

*p*

*ppp*

*ppp*

*mf*

*f*

*p*

*ff*

*fff*

*ppp*

*f*

*pp*

*ppp*

*mf*

*p*

*fff*

*ppp*

*f*

*pp*

*ppp*

*f*

*pp*

*ppp*

*f*

*p*

*ppp*

*f*

*pp*

*ppp*

*mf*

*f*

*mf*

*ff*

*ppp*

*f*

*pp*

*ppp*

♩ = 53

♩ = 186

65

Fl. 1 *f* *pp*

Fl. 2 *p* *p fff p pp*

Ob. 1 *f fff fff*

Ob. 2 *fff pp pp fff mf*

Kl. 1 *f fff pp pp*

Kl. 2 *f pp pp pp ppp*

65

Ob. *pp f fff ff p pp pp ppp mf*

65

Vln. I *f pp ff pp p p ppp*

Vln. II *pp f pp p pp p fff p pp*

Vln. III *pp f pp p pp ppp mf*

Vla. *f pp pp fff p pp mf*

Fl. 1

Fl. 2

Ob. 1

Ob. 2

Kl. 1

Kl. 2

Detailed description: This block contains the musical notation for measures 69, 70, and 71 for Flute 1, Flute 2, Oboe 1, Oboe 2, Clarinet 1, and Clarinet 2. Flute 1 has a half note G#4 in measure 70, marked *p*. Flute 2 has a half note G#4 in measure 71, marked *ff*. Oboe 1 has half notes G#4 in measures 69, 70, and 71, with dynamics *p*, *ff*, and *fff* respectively. Oboe 2 has half notes F#4 in measures 69, 70, and 71, with dynamics *pp*, *fff*, and *fff* respectively. Clarinet 1 has half notes G#4 in measures 69, 70, and 71, with dynamics *pp*, *p*, and *ff* respectively. Clarinet 2 has half notes G#4 in measures 70 and 71, with dynamics *ppp* and *fff* respectively.

Ob.

Detailed description: This block contains the musical notation for measure 69 for Oboe. The measure starts with a half note G#4, marked *pp*. It then has a quarter rest, followed by an eighth note G#4, marked *f*. This is followed by a triplet of eighth notes (G#4, A#4, Bb4), marked *ff*. The measure ends with a half note G#4, marked *fff*, followed by a quarter rest, and then a half note G#4, marked *ppp*. The final half note is marked *fff*.

Vln. I

Vln. II

Vln. III

Vla.

Detailed description: This block contains the musical notation for measures 69, 70, and 71 for Violin I, Violin II, Violin III, and Viola. Violin I has half notes G#4 in measures 69 and 70, marked *pp* and *p* respectively, and a half note G#4 in measure 71, marked *ppp*. Violin II has a half note G#4 in measure 70, marked *p*, and a half note G#4 in measure 71, marked *fff*. Violin III has half notes G#4 in measures 69 and 70, marked *pp* and *f* respectively, and a half note G#4 in measure 71, marked *ppp*. Viola has half notes G#4 in measures 69 and 70, marked *pp* and *p* respectively, and a half note G#4 in measure 71, marked *fff*.

♩ = 100

72

Fl. 1

*p* *mf* *p* *fff*

Fl. 2

*p* *mf* *p* *fff* *pp*

Ob. 1

*p* *mf* *fff* *f* *fff*

Ob. 2

*p* *pp* *fff* *fff* *f* *fff*

Kl. 1

*p* *fff* *f* *fff* *ppp*

Kl. 2

*p* *pp* *p* *fff* *f* *ppp*

Ob.

*p* *mf* *p* *fff* *p* *fff* *f* *pp* *ppp*

72

Vln. I

*pp* *fff* *pp* *ppp*

Vln. II

*p* *mf* *pp* *p* *ppp*

Vln. III

*mf* *p* *pp* *ppp*

Vla.

*p* *mf* *p* *pp*

Fl. 1 *pp* *ppp* *pp*

Fl. 2 *pp* *pp* *p* *mf* *fff*

Ob. 1 *fff* *fff* *pp* *f* *ppp* *mf* *p* *ff* *fff*

Ob. 2 *fff* *fff* *f* *ppp* *pp* *fff*

Kl. 1 *fff* *fff* *f* *ppp* *pp* *f* *mf* *fff*

Kl. 2 *f* *ppp* *pp* *ppp* *mf* *p*

Ob. *pp* *pp* *f* *ppp* *pp* *ppp* *pp* *f* *p* *ff* *fff*

Vln. I *ppp* *pp* *ppp* *pp* *p* *fff*

Vln. II *pp* *ppp* *pp* *p*

Vln. III *pp* *pp* *ppp* *f* *p*

Vla. *pp* *ppp* *pp* *ppp* *pp* *f* *mf* *ff*



♩ = 160

78

Fl. 1

*ff* *pp* *f*

Fl. 2

*ff* *pp*

Ob. 1

*p* *ff* *p* *f* *p* *p*

Ob. 2

*p* *p*

Kl. 1

*p* *p* *f* *p* *pp*

Kl. 2

*ppp* *ppp* *f*

Ob.

78 *ppp* *ff* *pp* *ppp* *pp* *pp* *f* *p* *mf* *p* *pp*

Vln. I

78 *ppp* *p* *ppp* *p* *f*

Vln. II

*pp* *pp* *f* *mf* *pp*

Vln. III

*ppp* *pp* *ppp* *pp* *f* *f* *mf* *p*

Vla.

*ppp* *ppp* *pp* *f* *f* *p* *mf* *p* *pp*

Fl. 1 *pp* *f*

Fl. 2 *pp* *f* *mf*

Ob. 1 *mf* *fff* *pp*

Ob. 2 *fff* *mf* *pp* *mf*

Kl. 1 *mf* *mf* *pp* *f*

Kl. 2 *mf* *pp* *mf* *mf* *ppp*

Ob. *pp* *fff* *mf* <sup>①</sup> *pp* *f* *mf* *f* *ppp*

Vln. I *pp* *mf* *f* *mf* *ppp*

Vln. II *pp* *fff* *mf* *f*

Vln. III *mf* *pp* *mf* *f* *ppp*

Vla. *mf* *pp* *fff* *mf* *f* *ppp*

♩ = 93

84

Fl. 1

Fl. 2

Ob. 1

Ob. 2

Kl. 1

Kl. 2

Ob.

Vln. I

Vln. II

Vln. III

Vla.

♩ = 160

89

Fl. 1

Fl. 2

Ob. 1

Ob. 2

Kl. 1

Kl. 2

Ob.

Vln. I

Vln. II

Vln. III

Vla.

♩ = 130

94

Fl. 1

Fl. 2

Ob. 1

Ob. 2

Kl. 1

Kl. 2

Ob.

Vln. I

Vln. II

Vln. III

Vla.

*pp*

*pp*

*p*

*p*

*pp*

*pp*

*p pp fff*

*pp*

*pp*

*fff ff*

*pp*

*pp*

*fff p fff p*

*fff ff*

*pp*

*mf pp*

*pp*

*fff*

*pp*

*pp*

*ppp*

*pp*

*pp*

*mf pp*

*p*

*pp*

*fff p*

*ff ppp*

*pp*

*p*

*fff*

*ppp*

*pp*

*p*

*pp*

*p*

*ff*

*mf*

*pp*

*pp*

*p*

*p*

*ppp mf*

*pp*

*pp*

*p*

*pp*

*p*

*ff*

*ppp*

Fl. 1

*p* *mf* *p* *pp*

Fl. 2

*p* *mf* *pp* *p* *pp*

Ob. 1

*pp* *pp*

Ob. 2

*pp* *mf* *pp*

Kl. 1

*pp* *pp* *pp*

Kl. 2

*pp* *p* *mf* *pp* *ppp* *pp* *ppp*

Ob.

*pp* *p* *mf* *p* *pp* *ppp* *pp* *ppp* *mf* *ff*

Vln. I

*pp* *p* *mf* *pp* *ppp* *pp* *ppp* *mf* *ff*

Vln. II

*pp* *p* *mf* *p* *pp* *p* *pp* *mf*

Vln. III

*pp* *p* *mf* *p* *pp* *pp* *ppp* *mf*

Vla.

*pp* *p* *mf* *p* *pp* *ppp* *p* *pp* *ppp* *mf*

♩ = 66

101

Fl. 1

Fl. 2

Ob. 1

Ob. 2

Kl. 1

Kl. 2

Ob.

Vln. I

Vln. II

Vln. III

Vla.

*mf* *ff*

*mf* *mf* *p* *pp*

*p* *fff* *fff*

*pp* *mf* *fff* *fff* *mf* *ff*

*fff* *fff* *pp*

*pp* *p* *mf* *ppp* *mf* *ff*

*mf* *p* *mf* *ppp* *ff* *pp*

*pp* *p* *p* *mf* *ppp* *mf* *ff*

*pp* *mf* *p* *mf* *p* *pp*

*mf* *p* *mf* *ppp*

*mf* *ppp* *mf* *ff*

♩ = 193

105

Fl. 1

Fl. 2

Ob. 1

Ob. 2

Kl. 1

Kl. 2

Ob.

Vln. I

Vln. II

Vln. III

Vla.



109

Fl. 1

*pp* *p* *mf* *pp*

Fl. 2

*pp* *ff* *p* *mf* *pp*

Ob. 1

*pp* *ff* *mf* *ff* *p* *mf* *pp*

Ob. 2

*pp* *ff* *fff* *mf* *p*

Kl. 1

*pp* *ff* *pp*

Kl. 2

*ppp* *mf* *p*

Ob.

109 *pp* *ff* *fff* *ppp* *mf* *ff* *p* *mf* *pp* *pp*

Vln. I

*pp* *ppp* *pp*

Vln. II

*pp* *fff* *p* *mf* *pp* *pp*

Vln. III

*ppp* *mf* *pp* *pp*

Vla.

*ppp* *p* *mf* *pp*